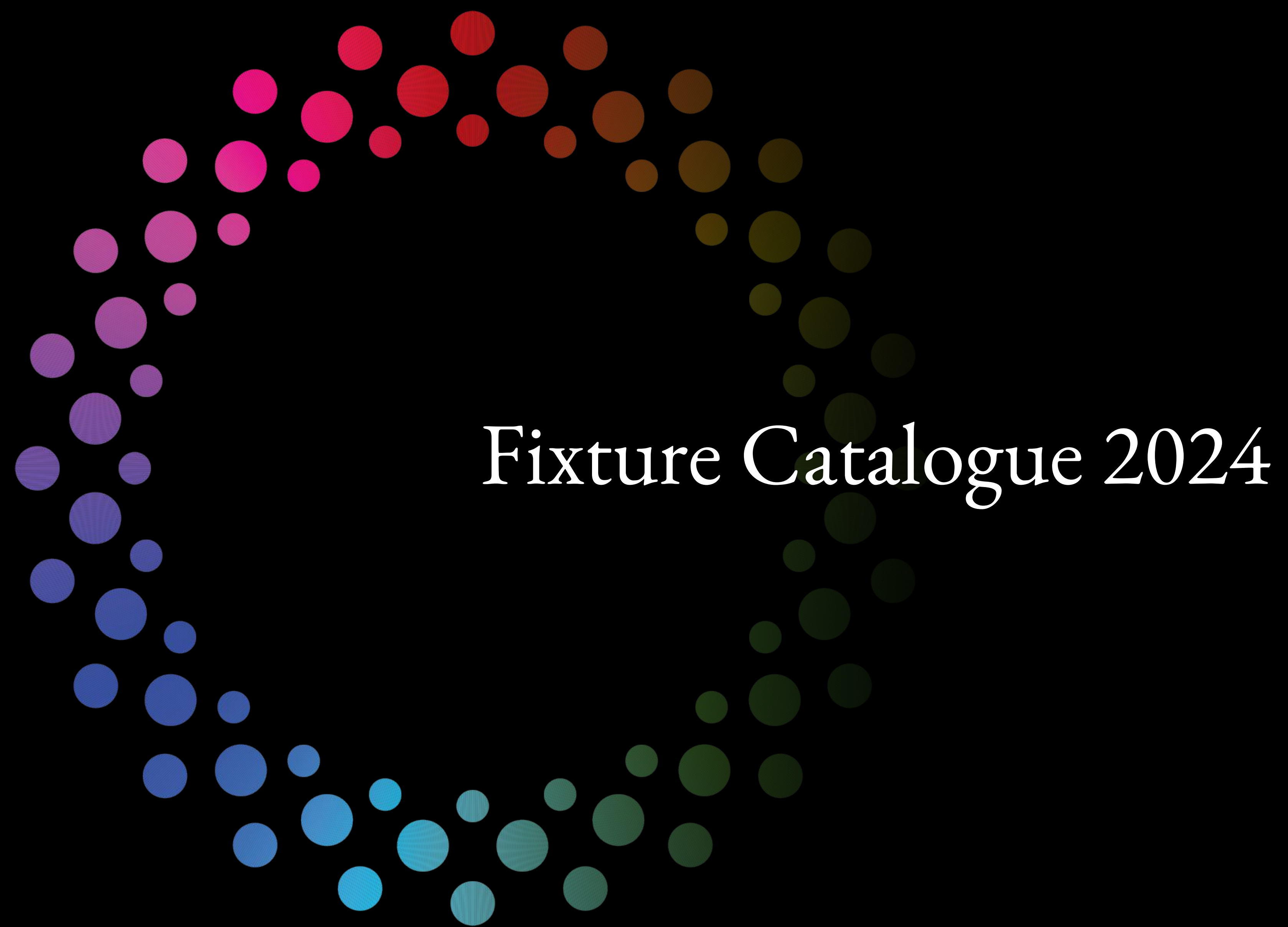





NEO LUMINA



Fixture Catalogue 2024


Static Lights

NEOPAR	
NEOZOOM	
NEOPANEL	
NEOBAR	

Lasers

NEOLASERMINI	
NEOGOBO	
NEOLASER15W	
NEOLASER80W	


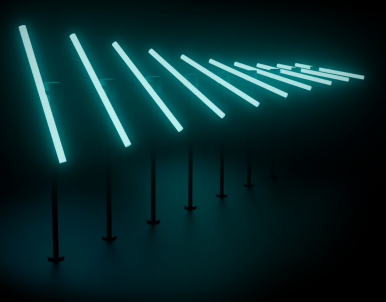
Fx

NEOSMOKE	
NEOBUBBLES	

Moving Lights

NEOSPOT700	
NEOBEAM480	
NEOKALEIDO	

Addressable Led

NEOTUBE1000	
NEOROTOR	

NEO LUMINA

NEO PAR
Light more for less



Technical Specifications

Voltage:	AC90V-240V/50-60Hz
Power:	180W
Power Consumption:	200W
Light Source:	18x15W(RGBWY 5-in-1 color LED)
Control Mode:	DMX512,Master/slave,sound(digital display)
Control Channels:	9 DMX Channels
Light Angle:	30°
IP Rate:	IP65
Net Weight:	4.6kgs
Packing Size:	605x360x405mm x2/box



[LINK TO MORE DOCUMENTATION](#)

NEO LUMINA

NEO ZOOM

Wide beam angles



Technical Specifications

Power Supply:	AC100-240V, 50Hz-60Hz
LED Source:	1PCSx150W RGBW 4 in 1 LED
Beam Angle:	15-60°
Strobe:	High speed electronic strobe, 1-25time/sec
Power Consumption:	200W
Dimming Curve:	Built-in 4 dimming curve optional
Operation Modes:	DMX, Auto, Master/Slave.RDM
Display:	OLED Display
DMX channels:	11
Built-in effects:	Yes
Cover:	Casting Aluminium
Protection Rate:	IP65
Dimensions:	296×220×436 mm
Power Cord:	Yes



NEO LUMINA

NEO PANEL

Light from all angles.



Technical Specifications

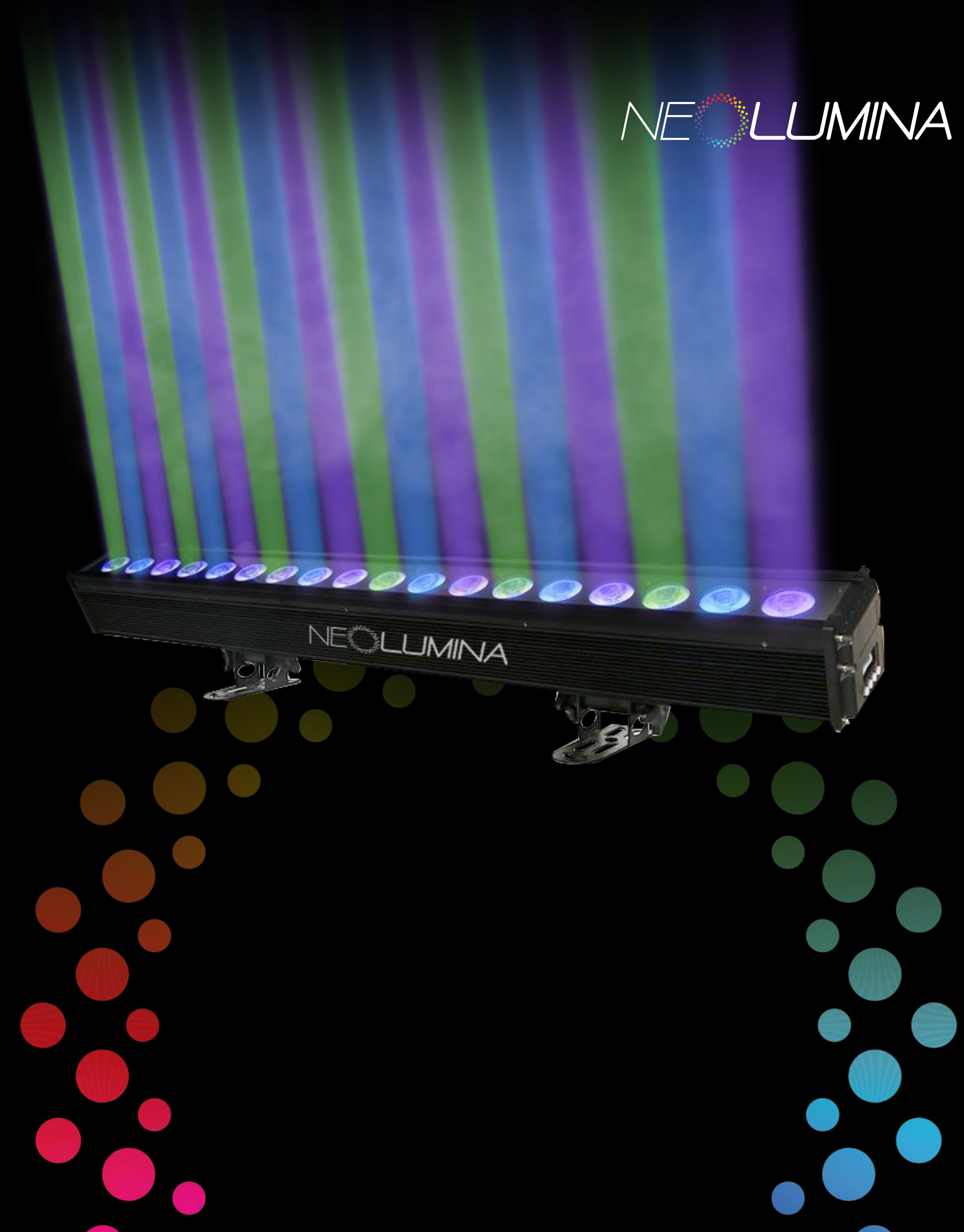
Voltage:	AC100-240V, 50/60Hz
Power:	800W
Light Source:	40x20W RGBW 4in1
Life Span:	≥ 30000 H
Beam Angle:	25° (5° /10° /15° /45° /60° Optional)
Color:	RGBW Color Mixing
Strobe:	1-25Hz/Sec Electric Strobe
Dimmer:	0-100% Linear Dimmer
Movement:	45° ~145° Tilt movement by manual
DMX Channel:	4/6/9CH
Working Mode:	DMX 512, Master/Slave, Work Auto,Support RDM Control
Software update:	Easy to update Via DMX Connector or USB
Display:	LCD display
Effect:	Extremely incredible light output , complete solution for specialized architectural projects with high standard requirements.
Housing:	High strength casting aluminum alloy
Working Temperature:	-20°C to 45°C
IP Rate:	IP65
Product Size:	54x22x31cm
Net Weight:	15.50kgs
Packing Size:	64x23x45cm
Gross Weight:	17.80kgs

[LINK TO MORE DOCUMENTATION](#)



NEOLUMINA

NEOBAR
Light from all angles.



Technical Specifications

Features:	18W 18PCS RGBAW+UV 6-IN-1 Pixel Wall Washer Light - Each LED and its color can be controlled individually
Voltage:	AC90V-245V/50-60Hz
Power:	200W.
Led:	18PCS 10W RGBWAUV 6IN1 LEDS
DMX Channels:	11/29/108/119CH
Beam Angle:	15°/25°/ 40° option
Colors:	Produce more than 1600 thousand colors - RGBW Wcolor can be mixed to more than 16.7million kinds of color
Lifetime:	>100 thousand hours
Function Effect:	Dimmer, strobe, eotic, gradual change - 0-100% dimming function with various strobe and speed can be adjusted
Control:	DMX512, Master-slave, stand-alone,sound-active
IP Rate:	IP65/IP20
Size:	111X18X23CM
Weight:	6.7kg



NEO LUMINA

NEO SPOT 700

Maximum Brightness



NEO SPOT 700

Technical Specifications

Focus: linear electric focus

Dimming: Smooth dimming without flicker

Light source specification: 700W LED, 8000K

LED life: 20000 hours

Strobe: independent strobe, 0.5-20 times/second adjustable

Color/Pattern/Effect

Color wheel: 5 color chips + white light CTO: independent cut-in CTO

CMY: independent cut-in CMY, linear CMY color switching

Prism: 4 prisms, bidirectional rotation, with positioning function.

Beam Angle: 2° to 50°

Fixed pattern wheel: 8 two-way shaking, animation, water effect

A rotating gobo wheel: 6 gobos + white circle

Control mode: DMX 512, self-propelled, master-slave

Rotation angle: X-axis 540 degrees, Y-axis 275 degrees can automatically correct the positioning

Channels: 26 channels

Cooling system: Super large high-quality copper tube fully enclosed radiator, gyroscope automatically adjusts the cooling system, effectively controlling the temperature of the lamp Dehumidification system: Intelligent dehumidification and defogging system, effectively guaranteeing the life of the lamp

The positioning system uses magnetic devices to replace the traditional Hall positioning system, which has higher precision and reliable performance.

Weight: 34KG

Carton size: 920*585*495mm

Protection level: IP66

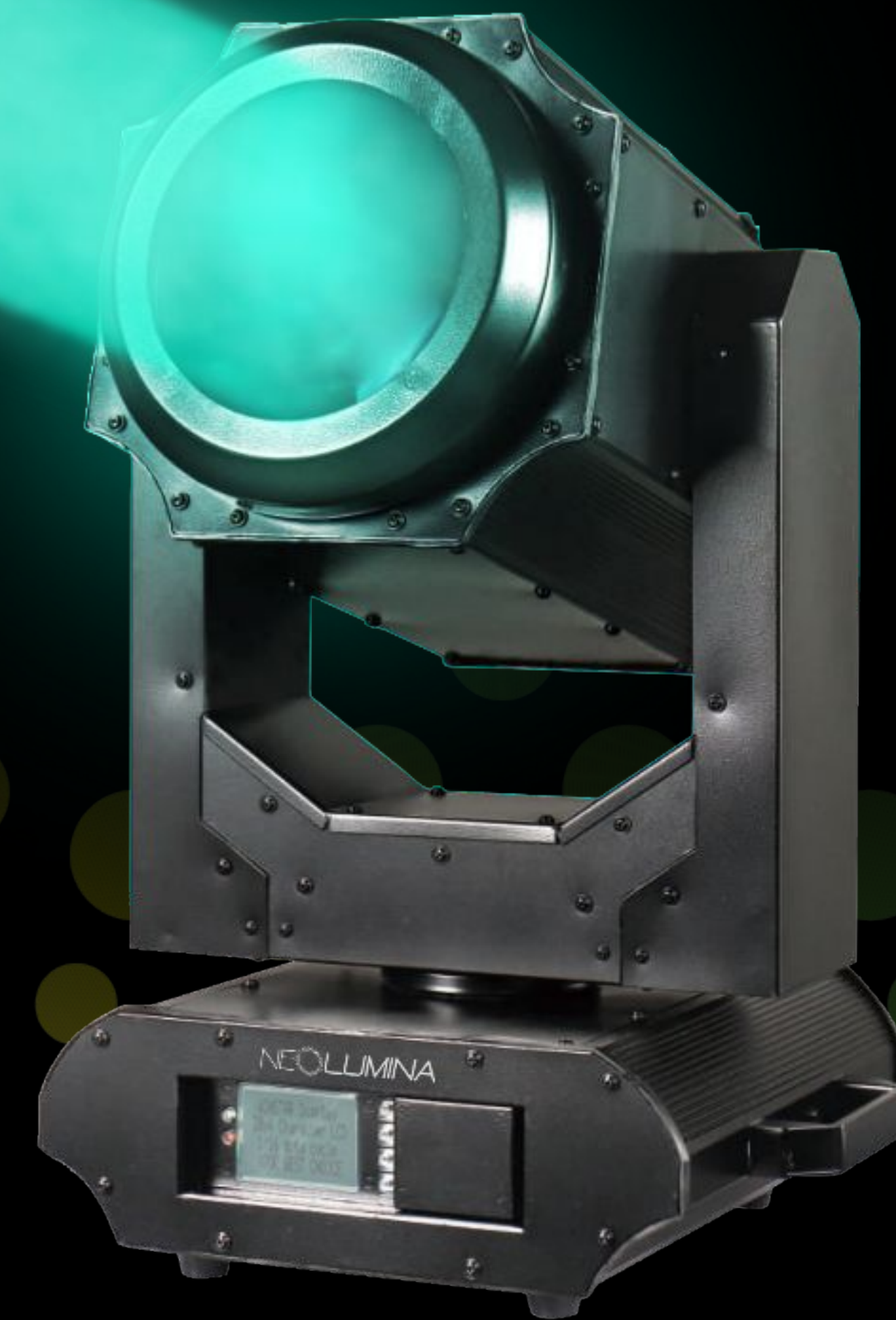


[LINK TO MORE DOCUMENTATION](#)

NEO LUMINA

NEO BEAM 480

Always on Focus



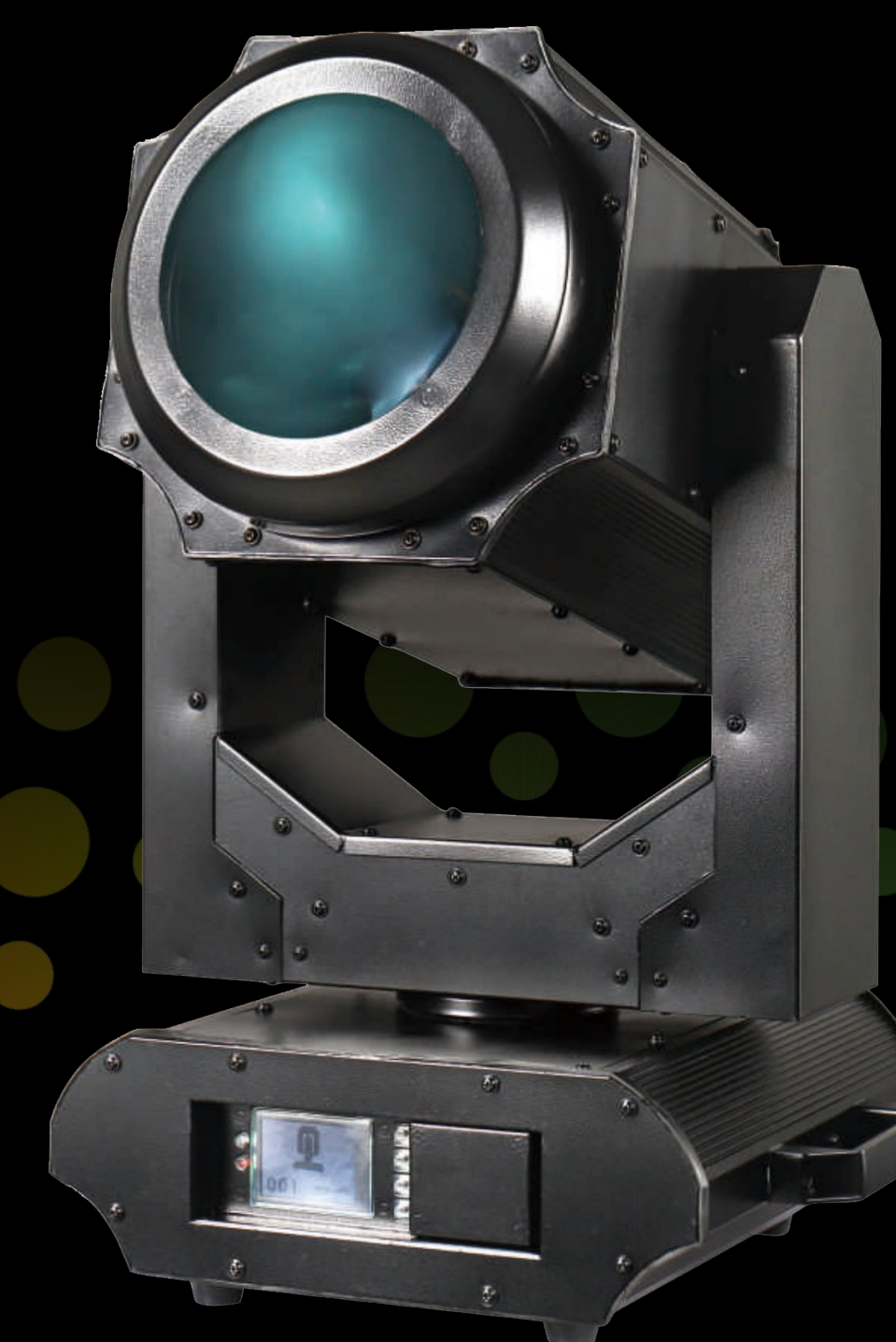
NEO BEAM 480

Technical Specifications

Features:	The latest third generation motherboard, support RDM, display programming. With built-in program.
Rated voltage:	AC100V-240V, 50 / 60Hz
Light source:	Original OSRAM 371 foam, total power: 650W
Beam angle:	Parallel beam angle 1.9 degrees, fixed drawing light hole 6mm
Linear dimming:	Independent dimming device, 0-100% linear dimming
High speed stroboscopic:	Pulse stroboscopic, stroboscopic speed 1-20 times per second
Fixed color:	1 fixed color disk, including 13 color chips + white light, colorful effect, half color effect, linear color conversion and bidirectional variable rotation rainbow effect
Static pattern:	A fixed pattern disk, containing 14 patterns + 1 flowing pattern
Prism:	A 16 prism and a (8 + 16 + 24) prism can be overlapped
Focusing:	High precision glass optical lens, electronic linear HD adjustment
Atomization:	1 independent atomization effect, soft and natural light spot
Color chip quality:	Imported from Italy, special high temperature resistant raw materials, to achieve strong, bright brightness.
Horizontal / vertical:	Horizontal scanning angle 540 degrees (16bit precision scanning), vertical scanning angle 270 degrees (16bit precision scanning)
XY motor:	Three phase motor. Three phase motor drive, powerful, faster, more stable, more silent lens size: 155mm
Channel mode:	18 international standard DMX512 channels
Bulb function:	Channel switch bulb and power on bulb function
Appearance:	High temperature resistant cast aluminum shell, adopting wind direction drainage and temperature intelligent monitoring technology
Net weight of lamp body:	24kg
Protection grade:	IP65
Lamp size:	40 * 33 * 65cm
Outer box size:	49 * 42 * 65

The product contains appearance patent certificate and software copyright registration certificate, with national test report certificate.

[LINK TO MORE DOCUMENTATION](#)



NEOLLUMINA

NEOKALEIDO

Effects at your fingertips



NEOKALEIDO

Technical Specifications

Voltage:	AC100-240V, 50/60Hz
Power:	800W
Light Source:	19x40W RGBW 4in1 LED
Life Span:	≥ 30000 H
Zoom Angle:	8° ~45°
Color Temperature:	6500K
Color:	RGBW Color Mixing
Strobe:	Electronic Strobe
Dimmer:	0-100% Linear Dimmer
Movement:	540° Pan can , 270° Tilt Scan, 16bit Scanning;Adjustable Pan & Tilt speed, Automatic Error Correction
DMX Channel:	21/23/35/78/97/92CH or 21/35CH Mode
Working Mode:	DMX 512, Master/Slave, Work Auto,Support RDM Control
Display:	LCD display
FX (Kaleido Effects)	Digital washbeam framing effect; Beam edge softening control (in wash mode)
Housing:	Aluminum Alloy Die-Cast +High temperature Engineering plastic
Working Temperature:	-20°C to 45°C
IP Rate:	IP65
Product Size:	42.4X31.4X53.4cm
Net Weight:	27.85kgs
Packing Size:	56x45x68cm(Carton)
Gross Weight:	33.90Kgs



[LINK TO MORE DOCUMENTATION](#)

NEO LUMINA

NEO LASER MINI

Small size, great effects



NEO LASER MINI

NEO LUMINA

Technical Specifications

Output Power:	3 Watt
Power Supply:	AC100~240V
Power Consumption:	40 watt
Red Laser Power:	600 mW @638nm
Green Laser Power:	800 mW @525nm
Blue Laser Power:	1600mW @450nm
Beam Specification:	ca. : <7mm, divergence: <1.2mrad
Scanner:	LY30KPPS
Patterns build inside:	More than 128 kinds of beam and graphics.
Max. Scanning Angle:	40°
Patterns built Inside:	More than 200 kind of beam and graphics
Red Laser Power:	4,5 Watt
Product Size:	250X125X105mm
Waterproof Level:	IP65
Play Modes:	Auto, DMX, Master/slave,
Net Weight:	2,6 kgs



[LINK TO MORE DOCUMENTATION](#)

NEO LUMINA

NEO GOBO
Projection made easy



Technical Specifications

Voltage:	AC110V-240V
Power Consumption:	250W (200W/350W)
Light Source:	200W White LED (150W/300W Optional)
Life Span:	50,000 Hours/ CRI:>90
Beam Angle:	30° (20° /45° / 60° optional)
Color:	5 color + White
Gobo:	4 Gobos , Can Be 360 degree rotating (GBR-LG200)/Ripple Pattern optional: Dual Ripple Effect Plates Overly with Bi-directional Rotating.
Control Mode:	DMX512, Sound Activated and Work Auto - Support DMX512 / RDM protocol and User Program
DMX Channel:	8 DMX Channels
Working Temperature:	-20°C to 50°C
IP Rate:	IP65
Product Size:	31x25x33cm
Net Weight:	8.4kgs
Packing Size:	48x33x30cm
Gross Weight:	10kgs



NEOLASER1SW

Sharp precision made affordable



Technical Specifications

Output Power:	15 Watt
Voltage:	AC100~250V, 50HZ/60HZ
Power Consumption:	300 watt
Red Laser Power:	4,5 Watt
Green Laser Power:	5,5 Watt
Blue Laser Power:	6 Watt
Beam Specification:	ca. : <6mm, divergence: <1.0mrad
Scanner:	DT40 (40KPPS@8°)
Interface:	5 pins XLR jack for DMX RJ45 Ethernet LAN port for Beyond/QS
TF Card:	32GB, build in program, and downloading program
Safety :	Key switch, remote interlock, safety shutter, SFS Control (scanner fail safety control ON/OFF), flying rings bolt
Work Environment:	outdoor and indoor, -30 °C --40 °C
Max. Scanning Angle:	60°
Patterns built Inside:	More than 200 kind of beam and graphics
Red Laser Power:	4,5 Watt
Product Size:	370X260X210mm
Waterproof Level:	IP65
Play Modes:	DMX512, FB4, Master/slave, Sound Active, TF card
Net Weight:	13,5 kgs



NEOLUMINA

NEOLASER80W

Maximum Laser Power



NEO LASER 80W

NEO LUMINA

Technical Specifications

Output Power:	80 Watt
Power Supply:	AC100~240V
Power Consumption:	300 watt
Red Laser Power:	20 Watt
Green Laser Power:	25 Watt
Blue Laser Power:	35 Watt
Beam Specification:	ca. : <6mm, divergence: <1.0mrad
Scanner:	DT30PLUS (Max 30KPPS@8°)
Interface:	5 pins XLR jack for DMX RJ45 Ethernet LAN port for Beyond/QS
TF Card:	32GB, build in program, and downloading program
Safety :	Key switch, remote interlock, safety shutter, SFS Control (scanner fail safety control ON/OFF), flying rings bolt
Work Environment:	outdoor and indoor, -30 °C --40 °C
Max. Scanning Angle:	60°
Patterns built Inside:	More than 200 kind of beam and graphics
Red Laser Power:	4,5 Watt
Product Size:	610X400X300mm - 610X400X300m (with bracket)
Waterproof Level:	IP65
Play Modes:	DMX512, FB4, Artnet, Master/slave, Sound Active, TF card
Net Weight:	59 kgs
Gross Weight:	83 kg (with flightcase)



[LINK TO MORE DOCUMENTATION](#)

NEOTUBE1000

No Strings Attached



NEOTUBE1000

NEOLUMINA

Technical Specifications

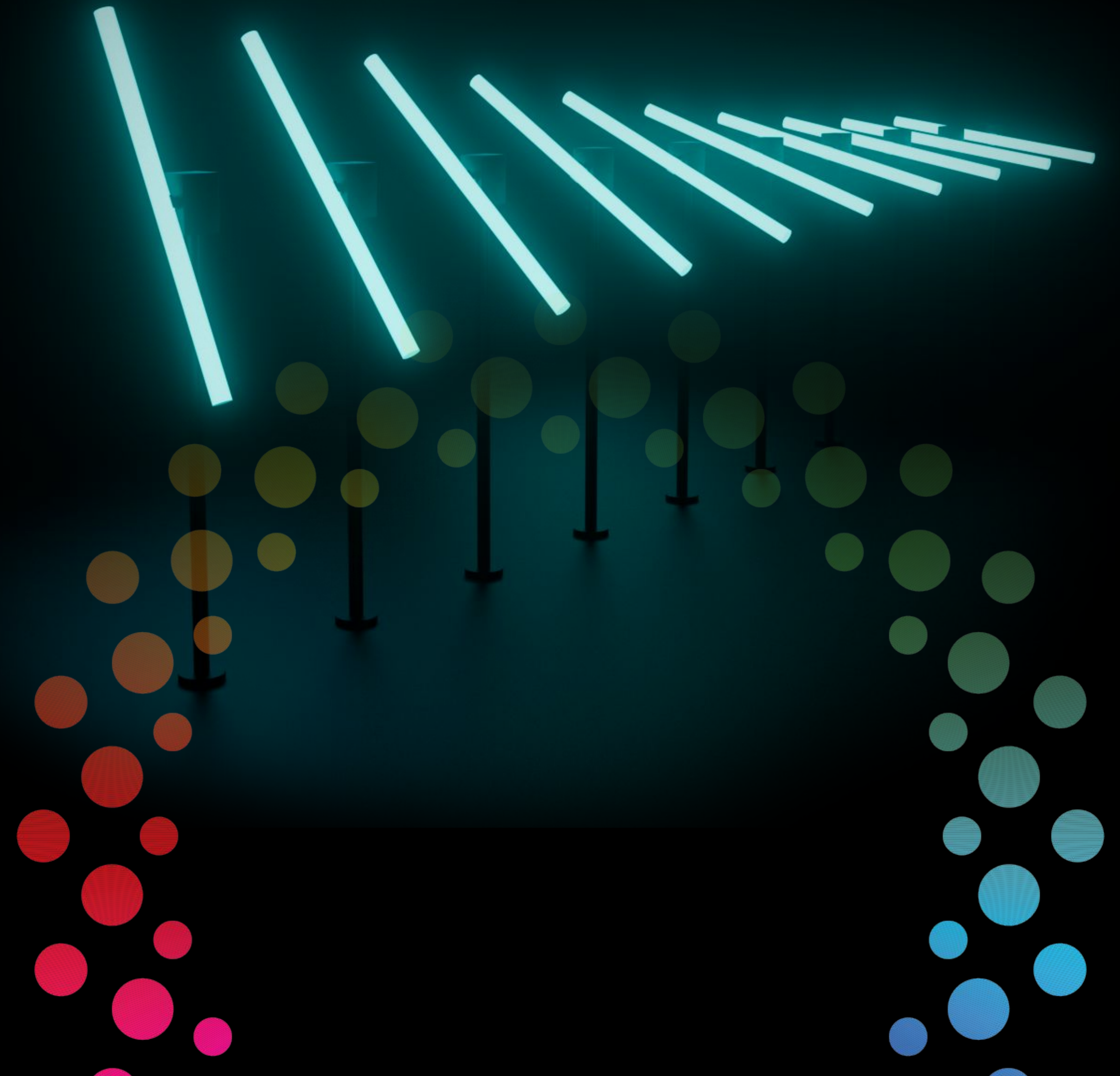
Product model:	CL-VB5050RGB32
Working voltage:	DC24V
Leds:	64 leds/m
Pixels:	64 pixels
IC type:	CL05
Power :	15 w/m
IP Grade:	IP67
Size:	W18, H37, L=1000/500/300
PC cover:	Square milky cover
Chipset:	SK6812 single signal transmission - Single led per single pixel point
Control Mode:	DVI or Artnet
Easy installation, no-slot joint connecting	
Easy connection by PSU	
Serial transmission, stable signal	

[LINK TO MORE DOCUMENTATION](#)



NEO LUMINA

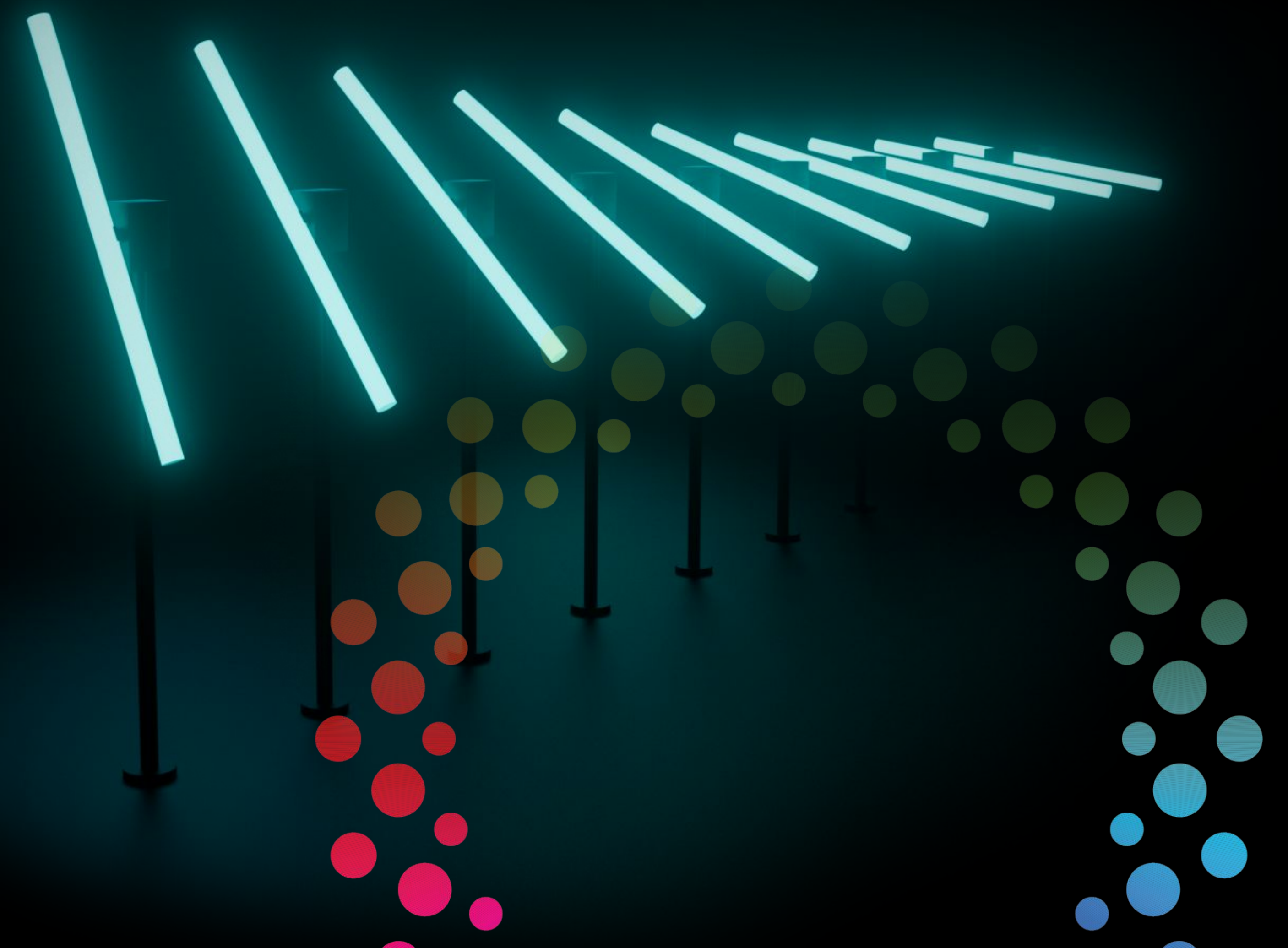
NEOROTOR
Light in motion



Technical Specifications

Power Supply:	DC24V
Power Consumption:	72W
Control Mode:	DMX512 - Artnet
Product Color:	Black
Product Material:	Aluminium
Led Tube Sizes:	100cm - 120cm - 150cm / 32mm diameter
Vertical Stand Sizes:	70cm - 80cm - 90cm
Rotation angle:	360°
Presets:	Built in presets available
Cascade Number:	6 Pcs.
Net Weight:	2 kgs

[LINK TO MORE DOCUMENTATION](#)



NEO SMOKE
Trace the light.



Technical Specifications

Smoke Output:	200m2 / 5min
Warm-up time:	–
Voltage:	AC110V -220V, 60Hz /50Hz
Max Power:	1200W
Control:	Remote / DMX512
DMX Channel:	2
Fuel Consumption:	1L/hour
N.W.:	18KG
G.W.:	18.5KG
Product Size:	58x30x43cm



NEO BUBBLES

Light in motion



NEOBUBBLES

NEOLUMINA

Technical Specifications

Power Supply:	220-240VAC/50-60Hz
Fuel Tank Volume:	2,3L x 4 bubble oil boxes + 2,3L x2 fog oil boxes
Bubble oil consumption:	181ml/min
Fog oil consumption:	64ml/min
Power:	1400w
Led quantity:	4 colors (red, green, blue & white)
Led Color:	48x 3W 3-in-1
Integrated Fans:	4
DMX channels:	8
Control Mode:	DMX512 / LED Display / Remote control
Package Size:	74X52X54cm
Gross Weight:	25 kgs
Remote Control:	Yes
Power Cord:	Yes



[LINK TO MORE DOCUMENTATION](#)

NEO CONTROLLER

Control the universe



NEO CONTROLLER

NEO LUMINA

Technical Specifications

Control up to 192 universes SPI over Artnet or sACN with the highest level of performance.

Up to 44.5FPS at maximum capacity

32 output up to 32640 pixels RGB

Compatible with more than 100 types of IC's

Compatible with Art-Net IV and sACN

Tested with Madrix, MadMapper, Resolume, ELM, MA, Chamsys and any software or console that supports Art-Net

100m between NeoController and fixtures

Input voltage: 12 VDC 1A

Housing: Aluminium

Weight: 800 gr.

Dimension: 120x85x46 mm – 4,72x3,34x1,81 inch. (LxWxH)

Temperature range: -10 °C to 60 °C - 14 °F to 140 °F

RH: 5% - 95% sin condensación

Certification: CE, RoHS, FCC Conectores

Inputs: 1x RJ45 ArtNet Ethernet 10, 100 Mbit/s, 12 VDC

Outputs: 8x RJ45





May the Light be with you!

NEO LUMINA